

Newsletter of the Extractive Industry Geology Conferences

# EIGConferences

Circular  
No: 3  
Date:  
May 2016



The Conference Venue  
University of Birmingham



In this issue  
Programme, Booking Form & Fees **P.1**  
Field Trips **P.2**



## EIG 2016 - University of Birmingham Tues 6th to Fri 9th September 2016 Programme, Booking Form & Field Trips



The arrangements for the September 2016 EIG Conference are coming together nicely with a wide range of paper topics accepted by the organising committee.

Highlights include the Ansel Dunham lecture to be given by Dr Alan Cobb of GWP Consultants in a lecture entitled "Aberfan and its implications for the UK extractive sector", particularly relevant in the 50th anniversary year of this disaster. The provisional programme has been attached to this newsletter.



2016, the 50th anniversary of the Aberfan tip disaster



The organising committee are also pleased to be able to hold the Early Bird conference package to 2014 prices at £295, which represents exceptional value (booked before the cutoff date of Friday 8th July 2016). Thereafter, the price will be £395 per delegate. This price includes two nights accommodation, Icebreaker Reception drinks, a Hog Roast, two days of conference lectures, teas, coffees, lunches, the trade stand exhibition and of course the Conference Dinner.



In a new direction for EIG, the organising committee wish to kick off the networking element of the conference with an EIG hosted hog roast following the ice breaker reception. Delegates won't have to go off in search of something to eat - instead they can start to catch up with the friends and colleagues, and dine in the pleasant surroundings of the on-site pub, the Duck and Scholar, situated overlooking the lake within The Vale student village.

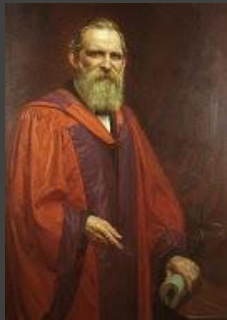


### Trade Stands

The EIG Conference is a superb opportunity to showcase your services and products to a large number of target customers.

A few remaining Trade stands are still available, but as in previous EIG's they are going fast ! The stands will be situated in the stunning Great Hall which will also be used for Teas and Coffees between sessions and lunches ensuring a good footfall. To enquire about securing a stand please contact John Peate at:

[john.peate@eigconferences.com](mailto:john.peate@eigconferences.com)



**Charles Lapworth  
At Birmingham**

He is best known for pioneering faunal analysis of Silurian beds by means of index fossils, especially graptolites, and his proposal (eventually adopted) that the beds between the Cambrian of North Wales and the Silurian of South Wales should be assigned to a new geological period: the Ordovician.

By the late 1870s he had a significant academic reputation and in 1881 he was appointed as the first professor of geology at Mason College, the forerunner of the University of Birmingham. As his first research project at Birmingham, Lapworth chose to re-examine the geological structure of the Northwest Highlands

Having taken up residence in Birmingham, Lapworth spent many years studying the rocks of the Midlands and Welsh Borderland, becoming the leading authority on the geology of the area. Much of his free time was spent taking groups including students, amateur and professional geologists, and natural history societies, on field excursions within the region.

## Lapworth Museum Tour and Two Towers Brewery Visit

A "private viewing" of the newly launched museum has been arranged following its £2.7M re-development. The private view will allow delegates a behind the scenes look at the very significant historic collections normally not on show, including the Lapworth Archive. <http://www.birmingham.ac.uk/facilities/lapworth-museum/collections/archive/index.aspx>

We are looking at organising a trip around the award winning Two Towers Brewery on Thursday 8th evening after the close of the conference. It costs £12 and we need a minimum 15 for it to go ahead. Please indicate on the booking form if you would like to attend.



## Field Trips

As usual, the Conference will incorporate pre-conference field trips on Tuesday 6<sup>th</sup> September and post conference trips on Friday 9<sup>th</sup> and Saturday 10<sup>th</sup> September, to a number of well known local quarries. A small charge of £15 per field trip will be levied for attendance.

### Tuesday 6th September

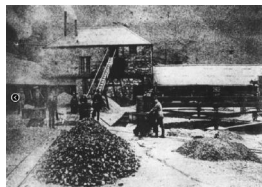
Bardon Hill (Aggregate Industries)  
Clee Hill (Hanson)

### Friday 9th September

Mancetter (Tarmac)  
Berkswell (Cemex)  
Wilnecote (Forterra Brick)

### Saturday 10th September

Ecton Mine (Historic copper mine)



## Main EIG Contacts

### EIG 2016 Organising Committee

Chairman, Simon McCurdy, Evolution Geological  
[simon.mccurdy@eigconferences.com](mailto:simon.mccurdy@eigconferences.com)

Secretary, Clive Mitchell, British Geological Survey  
[clive.mitchell@eigconferences.com](mailto:clive.mitchell@eigconferences.com)

Local Secretary, Richard Mitchener, Atkins  
[richard.mitchener@eigconferences.com](mailto:richard.mitchener@eigconferences.com)

University Contact, Paul Anderson  
[p.e.anderson@bham.ac.uk](mailto:p.e.anderson@bham.ac.uk)

Treasurer,  
Lee Clarke, Envireau Water  
Graham Smith, Border GeoScience (Deputy Treasurer)  
[lee.clarke@eigconferences.com](mailto:lee.clarke@eigconferences.com)  
[graham.smith@eigconferences.com](mailto:graham.smith@eigconferences.com)

Publicity & Press  
Adrian Charters, QuarryDesign Ltd (Newsletters)  
Clive Mitchell, British Geological Survey (Press Officer)  
[adrian.charters@eigconferences.com](mailto:adrian.charters@eigconferences.com)  
[clive.mitchell@eigconferences.com](mailto:clive.mitchell@eigconferences.com)

Mailing Lists, Jeremy Elvins, British Gypsum  
[jeremy.elvins@eigconferences.com](mailto:jeremy.elvins@eigconferences.com)

Trade Stands, John Peate, Hanson  
[tradestands@eigconferences.com](mailto:tradestands@eigconferences.com)

Sponsorship  
Nick Horsley, Sibelco  
Paul Jennings, Cemex (Deputy)  
Andrew Smith, Pilkingtons (Deputy)  
[nick.horsley@eigconferences.com](mailto:nick.horsley@eigconferences.com)  
[paul.jennings@eigconferences.com](mailto:paul.jennings@eigconferences.com)  
[andrew.smith@eigconferences.com](mailto:andrew.smith@eigconferences.com)

Papers and Presentations  
Peter Scott, Camborne School of Mines  
Alan Thompson, Cuesta Consulting  
Duncan Wardrop, Wardrop Minerals Management  
Geoffrey Walton, Dustscan  
[peter.scott@eigconferences.com](mailto:peter.scott@eigconferences.com)  
[alan.thompson@eigconferences.com](mailto:alan.thompson@eigconferences.com)  
[duncan.wardrop@eigconferences.com](mailto:duncan.wardrop@eigconferences.com)  
[geoffrey.walton@eigconferences.com](mailto:geoffrey.walton@eigconferences.com)

Conference Field Trips, Gerry Lucas, Edge Hill University  
[gerry.lucas@eigconferences.com](mailto:gerry.lucas@eigconferences.com)

Proceedings  
Emily Hunger, Rock Options (Editor in Chief)  
Teresa Brown, British Geological Survey (Deputy Editor)  
Gerry Lucas, Edge Hill University (Sub-Editor)  
[emily.hunger@eigconferences.com](mailto:emily.hunger@eigconferences.com)  
[teresa.brown@eigconferences.com](mailto:teresa.brown@eigconferences.com)  
[gerry.lucas@eigconferences.com](mailto:gerry.lucas@eigconferences.com)

Scholarships  
Steve Penn, University of Portsmouth  
Alex Finlay, Origin Analytical (Deputy)  
[steve.penn@eigconferences.com](mailto:steve.penn@eigconferences.com)  
[alex.finlay@eigconferences.com](mailto:alex.finlay@eigconferences.com)

Research, Tom Clifford, Atkins  
[tom.clifford@eigconferences.com](mailto:tom.clifford@eigconferences.com)

Charity  
Nick Horsley, Sibelco  
Paul Jennings, Cemex (Deputy)  
[nick.horsley@eigconferences.com](mailto:nick.horsley@eigconferences.com)  
[paul.jennings@eigconferences.com](mailto:paul.jennings@eigconferences.com)

Promotional Materials  
Anne Smith, APSGS  
[anne.smith@eigconferences.com](mailto:anne.smith@eigconferences.com)

Continuous Professional Development (CPD)  
Sabina Michnowicz  
[sabina.michnowicz@eigconferences.com](mailto:sabina.michnowicz@eigconferences.com)

One Day Event  
Geoffrey Walton, EIG Conferences (Chairman)  
Claire Howarth, Mott MacDonald (Deputy)  
Duncan Wardrop, Wardrop Minerals Management (Assistant)  
Graham Smith, Border GeoScience (Finance)  
[claire.howarth@eigconferences.com](mailto:claire.howarth@eigconferences.com)